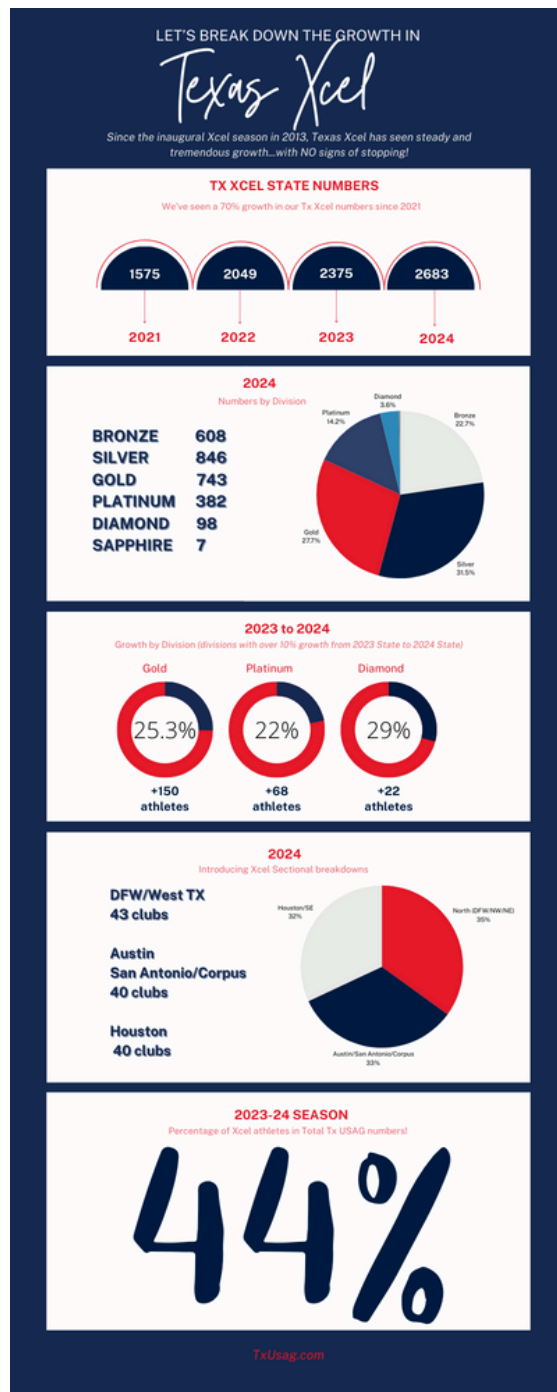


# Texas USAG Xcel Sectional Breakdown

Exciting changes coming for our Texas USAG Xcel Program. Texas has experienced unprecedented growth in the past 4 years, growing over 70% in that short time! Xcel is now 44% of the total Texas USAG numbers. In order to better serve our Xcel Community, Gyms and Athletes we had to take a look at our numbers and geographic participation in the State. As our Xcel Program continues to grow, we needed to implement some changes to best facilitate that growth.

## Xcel Sectionals for Silver and Gold

Moving forward, we will no longer use the North/South State model for our Xcel Program. We have simply outgrown that format. We are moving to a new 3 Sectional format. After some research and discussion we found it to be an excellent direction for our state. Xcel Bronze will no longer have a culminating meet. They will be able to compete in as many Invitationals as you'd like. Xcel Silver Sectional Championships will be their culminating meet of the season. Xcel Gold Sectional Championship will be a qualification meet for State. *Qualification for XG to State will be a 34.00 at Sectionals.*



## Xcel Sectional Geographic Breakdown

*North Texas* will include: Dallas/Ft. Worth, North West Texas (Midland/Odessa and north), NE Texas (north of Nacogdoches), Waco.

*Greater Houston* will include all of greater Houston, Beaumont, Galveston, Pearland, Nacogdoches/Lufkin.

Central/South Texas will include Austin, Killen/Temple and south, San Antonio, Corpus Christie, El Paso

## 2025 Texas Xcel Sectional Breakdown

